

CLAYTON COUNTY, GEORGIA

Consolidated Annual Performance Evaluation Report (CAPER) – Executive Summary

Program Year 2022
July 1, 2022 – June 30, 2023

Clayton County Board of Commissioners



Chief Operating Officer
Detrick Stanford

Office of Grants Administration
Linda Boswell, Grants Administrator

Executive Summary

The Clayton County Consolidated Annual Performance and Evaluation Report (CAPER) outlines the accomplishments and challenges associated with the implementation of the Community Development Block Grant (CDBG), HOME Investment Partnership (HOME) and Emergency Solutions Grant (ESG) programs during the 2022 program year. Collectively, these three funding sources are components of a broad strategy for meeting locally defined housing and community development needs targeting Clayton County's low- and moderate-income households and communities.

This report details projects and programs completed during the program year beginning on July 1, 2022 and ending on June 30, 2023. Moreover, the report measures the accomplishments against the goals detailed in the County's 2018-2022 Consolidated Plan and 2022 Annual Action Plan. Goals detailed within the CAPER were established in response to input received from local stakeholders, residents, non-profit organizations, businesses and elected officials during the consolidated planning process. From these goals, specific objectives, strategies and annual performance targets were developed. Local stakeholders are encouraged to review the narrative and tables in the document to help assess and positively impact the County's actual performance.

For Program year 2022 (PY2022), Clayton County received \$3,810,070, in grant funding from the U.S. Department of Housing and Urban Development (HUD). This includes \$2,375,419 in support of the CDBG program, \$1,225,303 in HOME funding and \$209,348 for the ESG program. For the reporting period ending June 30, 2023, the County's total grant expenditures were \$3,755,811. The table below compares PY2022 expenditures and PY2021 expenditures. It is important to note that the \$3.76 million includes all (previous years and current year) funding expended between July 1, 2022 and June 30, 2023 as well as funding originating in prior grant years.

Comparison of Grant Expenditures in Fiscal Years 2021 and 2022			
	PY 2021	PY 2022	% Change
CDBG	\$2,051,252	\$2,629,946	28.21%
HOME	\$239,610	\$948,824	295.99%
ESG	\$213,228	\$177,041	-16.97%
TOTAL	\$2,504,090	\$3,755,811	50.00%

A detailed assessment of each of the PY2022 Entitlement Grants and projects is contained within the body of this CAPER.

In 2022, Clayton County prioritized projects and activities that best aligned with the goals articulated in its Consolidated and Annual Action Plans. This includes the implementation of key projects and activities that support the County's five broad goals including:

1. Affordable Housing;
2. Community Development;
3. Decent Housing;
4. Homeless Prevention; and
5. Suitable Living Environments.

The chart below illustrates the percent of the County's total \$3.76 million grant expenditures during the program year based the aforementioned goals:



Noteworthy highlights from PY2022 include:

Goal Supported	Activity
Affordable Housing	Clayton County provided downpayment assistance to 17 low- and moderate-income homebuyers to increase the affordability of their mortgage resulting in homeownership.
	Clayton County, through the Clayton County Office of Grants Administration, provided Tenant Based Rental Assistance (TBRA) for 14 formerly homeless families with children attending Clayton County Public Schools in an effort to facilitate their transition into permanent housing.
Community Development	Hearts to Nourish Hope utilized CDBG funding to complete the initial phase of the renovations of its facility which serves underprivileged youth and young adults.
	Over 140 Clayton County residents participated in housing counseling, homebuyer education and fair housing classes supported by CDBG funding.
	Clayton County Parks and Recreation completed the installation of 3 outdoor modules restrooms at various parks throughout the County.
Suitable Living Conditions	The City of Lake City completed phase 1 improvements to Willie Oswalt Park and Trail.
	The City of Jonesboro completed construction of infrastructure improvements at Lee Street Park.
Decent Housing	Clayton County's Essential Home Repair Program assisted a total of 16 homes for very low income seniors, disabled residents and veterans.
	Southern Crescent Habitat for Humanity completed minor home repairs to 10 very low income seniors, disabled residents and veterans.
Homeless Prevention	Homelessness prevention efforts completed across six agencies collectively served nearly 1,790 low- and moderate-income individuals.
	Over 421 homeless individuals across three agencies received emergency shelter during the program year.
	Rapid re-housing services were provided to 2 households comprising of 5 low/moderate income persons

Clayton County also continued its progress towards the delivery of a more adaptive and accessible program. Included in this strategy was an effort to extend program delivery options and coverage to all residents of the county with special attention on the disabled and non-English speaking population. Additionally, our emphasis on subrecipient compliance helped ensure that all stakeholders and partners understand program regulations, timeliness and related federal requirements.

To this end, Clayton County completed a number of engagement activities including but not limited to the following:

1. Continuing to host one-on-one meetings with agencies to develop better communication around areas of concern, changes in procedure and new opportunities associated with funded projects;
2. Conducting monitoring with subrecipients to improve measures of federal compliance across our portfolio of subrecipients.

CR-05 - Goals and Outcomes

Progress the jurisdiction has made in carrying out its strategic plan and its action plan.

91.520(a)

This could be an overview that includes major initiatives and highlights that were proposed and executed throughout the program year.

In 2022, Clayton County prioritized projects and activities that best aligned with the goals articulated in its Consolidated and Annual Action Plans. This includes the implementation of key projects and activities that support the County's five broad goals including:

1. Affordable Housing;
2. Community Development;
3. Decent Housing;
4. Homeless Prevention; and
5. Suitable Living Environments.

The chart below illustrates the percent of the County's total \$3.68 million grant expenditures during the program year based the aforementioned goals:

Affordable Housing - Clayton County provided downpayment assistance to 17 low- and moderate-income homebuyers to increase the affordability of their mortgage resulting in homeownership. Clayton County, through the Clayton County Office of Grants Administration, provided Tenant Based Rental Assistance (TBRA) for 14 formerly homeless families with children attending Clayton County Public Schools in an effort to facilitate their transition into permanent housing.

Community Development - Hearts to Nourish Hope utilized CDBG funding to complete the initial phase of the renovations of its facility which serves underprivileged youth and young adults. One hundred forty Clayton County residents participated in housing counseling, homebuyer education and fair housing classes supported by CDBG funding. Clayton County Parks and Recreation completed the installation of 3 outdoor modules restrooms at various parks throughout the County.

Suitable Living Conditions - The City of Lake City completed phase 1 improvements to Willie Oswalt Park and Trail. The City of Jonesboro completed construction of infrastructure improvements at Lee Street Park.

Decent Housing - Clayton County's Essential Home Repair Programs assisted a total of 16 homes for very low income seniors, disabled residents and veterans. Southern Crescent Habitat for Humanity completed minor home repairs to 10 very low income seniors, disabled residents and veterans.

Homeless Prevention - Homelessness prevention efforts completed across six agencies collectively served nearly 1,790 low- and moderate-income individuals. Over 421 homeless individuals across three agencies received emergency shelter during the program year. Rapid re-housing services were provided to 2

households comprising of 5 low/moderate income persons.

Clayton County also continued its progress towards the delivery of a more adaptive and accessible program. Included in this strategy was an effort to extend program delivery options and coverage to all residents of the county with special attention on the disabled and non-English speaking population. Additionally, our emphasis on subrecipient compliance helped ensure that all stakeholders and partners understand program regulations, timeliness and related federal requirements.

To this end, the Office of Grants Administration completed a number of engagement activities including but not limited to the following:

1. Continuing to host one-on-one meetings with agencies to develop better communication around areas of concern, changes in procedure and new opportunities associated with funded projects;
2. Conducting weekly monitoring with subrecipients to improve measures of federal compliance across our portfolio of subrecipients.

Comparison of the proposed versus actual outcomes for each outcome measure submitted with the consolidated plan and explain, if applicable, why progress was not made toward meeting goals and objectives. 91.520(g)

Categories, priority levels, funding sources and amounts, outcomes/objectives, goal outcome indicators, units of measure, targets, actual outcomes/outputs, and percentage completed for each of the grantee’s program year goals.

Goal	Category	Source / Amount	Indicator	Unit of Measure	Expected – Strategic Plan	Actual – Strategic Plan	Percent Complete	Expected – Program Year	Actual – Program Year	Percent Complete
Affordable Housing (AH)	Affordable Housing	HOME: \$	Homeowner Housing Added	Household Housing Unit	100	35	35.00%	10	13	130.00%
Affordable Housing (AH)	Affordable Housing	HOME: \$	Homeowner Housing Rehabilitated	Household Housing Unit	0	22		0	11	
Affordable Housing (AH)	Affordable Housing	HOME: \$	Direct Financial Assistance to Homebuyers	Households Assisted	300	0	0.00%	70	0	0.00%
Affordable Housing (AH)	Affordable Housing	HOME: \$	Tenant-based rental assistance / Rapid Rehousing	Households Assisted	225	0	0.00%			
Community Development (CD)	Non-Housing Community Development	CDBG: \$	Public Facility or Infrastructure Activities other than Low/Moderate Income Housing Benefit	Persons Assisted	265888	256596	96.51%	10000	256260	2562.60%

Community Development (CD)	Non-Housing Community Development	CDBG: \$	Public service activities other than Low/Moderate Income Housing Benefit	Persons Assisted	15000	404	2.69%			
Community Development (CD)	Non-Housing Community Development	CDBG: \$	Facade treatment/business building rehabilitation	Business	0	10				
Community Development (CD)	Non-Housing Community Development	CDBG: \$	Homeless Person Overnight Shelter	Persons Assisted	0	0				
Community Development (CD)	Non-Housing Community Development	CDBG: \$	Overnight/Emergency Shelter/Transitional Housing Beds added	Beds	0	0				
Community Development (CD)	Non-Housing Community Development	CDBG: \$	Businesses assisted	Businesses Assisted	0	10				
Decent Housing (DH)	Affordable Housing Non-Homeless Special Needs	CDBG: \$	Homeowner Housing Added	Household Housing Unit	0	0				
Decent Housing (DH)	Affordable Housing Non-Homeless Special Needs	CDBG: \$	Homeowner Housing Rehabilitated	Household Housing Unit	400	134	33.50%	53	42	79.25%

Homeless Prevention (HML)	Homeless	CDBG: \$ / HOME: \$50000 / ESG: \$	Public Facility or Infrastructure Activities other than Low/Moderate Income Housing Benefit	Persons Assisted	0	12		0	12	
Homeless Prevention (HML)	Homeless	CDBG: \$ / HOME: \$50000 / ESG: \$	Public service activities other than Low/Moderate Income Housing Benefit	Persons Assisted	0	63				
Homeless Prevention (HML)	Homeless	CDBG: \$ / HOME: \$50000 / ESG: \$	Tenant-based rental assistance / Rapid Rehousing	Households Assisted	0	0		255	0	0.00%
Homeless Prevention (HML)	Homeless	CDBG: \$ / HOME: \$50000 / ESG: \$	Homeless Person Overnight Shelter	Persons Assisted	36250	24	0.07%	0	12	
Homeless Prevention (HML)	Homeless	CDBG: \$ / HOME: \$50000 / ESG: \$	Overnight/Emergency Shelter/Transitional Housing Beds added	Beds	250	0	0.00%	250	0	0.00%
Homeless Prevention (HML)	Homeless	CDBG: \$ / HOME: \$50000 / ESG: \$	Homelessness Prevention	Persons Assisted	4500	0	0.00%	220	0	0.00%

Planning and Program Administration	Affordable Housing Public Housing Homeless Non-Homeless Special Needs Non-Housing Community Development	CDBG: \$ / HOME: \$ / ESG: \$	Other	Other	9	0	0.00%	9	0	0.00%
Slum/Blight (SB)	Non-Housing Community Development	CDBG: \$	Buildings Demolished	Buildings	4	0	0.00%			
Suitable Living Environment (SL)	Non-Housing Community Development	CDBG: \$	Public Facility or Infrastructure Activities other than Low/Moderate Income Housing Benefit	Persons Assisted	265888	281920	106.03%	6000	100	1.67%
Suitable Living Environment (SL)	Non-Housing Community Development	CDBG: \$	Public service activities other than Low/Moderate Income Housing Benefit	Persons Assisted	15000	100	0.67%			

Table 1 - Accomplishments – Program Year & Strategic Plan to Date

Assess how the jurisdiction's use of funds, particularly CDBG, addresses the priorities and specific objectives identified in the plan, giving special attention to the highest priority activities identified.

During program year 2022, Clayton County prioritized activities that promoted the goals articulated in its 2018-2022 Consolidated Plan and 2022 Annual Action Plan. In regards to the County's stated goals, a number of activities focused on Decent Housing and Affordable Housing. Specifically, this included continued support for the County's Essential Home Repair Program and Emergency Home Repair Program. Also included in these efforts were home repair assistance facilitated by Southern Crescent Habitat for Humanity as well as housing counseling and homebuyer education workshops provided by Atlanta Metro Fair Housing, Inc. These activities account for 14.1% of the County's annual CDBG expenditures and helped to ensure that housing deficiencies threatening the County's most vulnerable residents were ameliorated and that the County remained an attractive destination to first-time homebuyers.

Additional emphasis was placed on activities supporting the Suitable Living and Community Development goals. Activities supporting these goals included slum and blight clearance, public infrastructure and facility improvements, the provision of funding for public service activities. Notable projects include improvements to City of Lake City Willie Oswalt Park and Trail, Lee Street Park improvements in the City of Jonesboro, improvements at Hearts to Nourish Hope and park improvements throughout the County. The aforementioned goals comprised 65.7% of the County's annual CDBG expenditures.

Homeless Prevention remained a critical priority during the program year. Activity supporting this goal included the operations of a 10-bed emergency shelter for mothers with young children. Additionally, funding was provided in support of the operations of one of the County's existing emergency shelters. The Student Housing Initiative Program (SHIP) benefitting homeless families with students enrolled in the County's Public School System and the provision of emergency rent and utility payments for households threatened by evection and/or utility interruption were also continued.

Overall, during the 2022 program year, Clayton County made progress towards achieving the goals and objectives contained in its Consolidated and Annual Action Plans. Going forward, the County will continue to work to improve its institutional structure in an effort to expedite the Request of Release of Funds and completion of projects.

Beyond the support provided toward achieving the County's priorities, key steps were taken to improve the administration of its programs through enhanced planning, coordination, oversight and monitoring of

all grant-funded activities.

The distribution of funding by goal is further illustrated in the following chart:



CR-10 - Racial and Ethnic composition of families assisted

Describe the families assisted (including the racial and ethnic status of families assisted).

91.520(a)

	CDBG	HOME	ESG
White	584	0	60
Black or African American	13,603	33	874
Asian	926	0	2
American Indian or American Native	0	0	0

Native Hawaiian or Other Pacific Islander	0	0	0
Total	15,123	33	936
Hispanic	3,566	3	15
Not Hispanic	11,557	30	921

Table 2 – Table of assistance to racial and ethnic populations by source of funds

Narrative

During the program year, direct services were provided to a total of approximately **4,037** households by agencies receiving CDBG, HOME and ESG funding. Beneficiary information was provided by subrecipients on a monthly basis and includes program activities such as: Housing Counseling and Financial Literacy; Essential and Emergency Home Repairs for Seniors; Southern Crescent Habitat for Humanity Critical Home Repair; Homeless Shelter Operations, Tenant-Based Rental Assistance; Homelessness Prevention through Rent and Utility Assistance and First-Time Homebuyer Downpayment Assistance.

The Hispanic population accounted for nearly three percent of the total population served. Beneficiaries counted as Black or African-American accounted for 90 percent of the population served. Approximately, seven percent of beneficiaries were White, while the remaining three percent of low- to moderate income residents served was either mixed-race, Asian, American Indian/American Native or Hawaiian/Pacific Islander. The estimated number of beneficiaries from public infrastructure and public facility improvements undertaken during the program year is 10,000 persons. This includes the completion of improvements for the City of Lake City Willie Oswalt Park and Trail and Lee Street Park in the City of Jonesboro. Additionally, public facility improvements include the installation of security cameras and outdoor module restrooms at various Clayton County parks.

CR-15 - Resources and Investments 91.520(a)

Identify the resources made available

Source of Funds	Source	Resources Made Available	Amount Expended During Program Year
CDBG	public - federal	\$2,375,419	\$2,629,946
HOME	public - federal	\$1,225,303	\$948,824
ESG	public - federal	\$209,348	\$177,041

Table 3 - Resources Made Available

Narrative

For Program year 2022 (PY2022), Clayton County received \$3,810,070, in grant funding from the U.S. Department of Housing and Urban Development (HUD). This includes \$2,375,419 in support of the CDBG program, \$1,225,303 in HOME funding and \$209,348 for the ESG program. For the reporting period ending June 30, 2023, the County's total grant expenditures were \$3,755,811. The table below compares PY2022 expenditures and PY2021 expenditures. It is important to note that the \$3.76 million includes all (previous years and current year) funding expended between July 1, 2022 and June 30, 2023 as well as funding originating in prior grant years.

Comparison of Grant Expenditures in Fiscal Years 2021 and 2022			
	PY 2021	PY 2022	% Change
CDBG	\$2,051,252	\$2,629,946	28.21%
HOME	\$239,610	\$948,824	295.99%
ESG	\$213,228	\$177,041	-16.97%
TOTAL	\$2,504,090	\$3,755,811	50.00%

Identify the geographic distribution and location of investments

Target Area	Planned Percentage of Allocation	Actual Percentage of Allocation	Narrative Description
Countywide Projects & Activities	100	100	Non Site Specific

Table 4 – Identify the geographic distribution and location of investments

Narrative

Clayton County strives to ensure that its HUD Funded grant projects and activities are widely distributed throughout eligible areas of the County. This includes the County's four Commissioners Districts and local municipalities participating in the Urban Certification process: Cities of Lovejoy, Jonesboro, Morrow, Riverdale, Forest Park and Lake City. While this approach admittedly deemphasizes the target areas established in the 2013-2017 Consolidated Plan, it ensures that resources are evenly distributed. The map that follows details the distribution of grant activity throughout the County during the 2022 program year.

Leveraging

Explain how federal funds leveraged additional resources (private, state and local funds), including a description of how matching requirements were satisfied, as well as how any publicly owned land or property located within the jurisdiction that were used to address the needs identified in the plan.

In PY2022, Clayton County continued the prioritization of projects that included commitments for match funding originating in the public (non-federal), private, or philanthropic sectors. This was done to ensure that projects met the prescribed match requirements for the HOME and ESG programs. Additionally, in the context of the CDBG program, projects with dedicated match funding were considered favorably in the application process. Sources of match funding included but are not limited to the following entities:

- The Clayton County General Fund,
- Special Purpose Local Option Sales Tax (SPLOST),
- The Clayton County Commissioner's Block Grant Program,
- The Community Foundation for Greater Atlanta,
- The Georgia Department of Community Affairs (DCA),
- The United Way of Georgia

Additionally, in-kind donations and volunteer hours were also included in the tabulation of match funding. In-kind donations were included at the value specified by the donor and the value of volunteer hours was calculated using \$7.50 as the prevailing hourly rate for unskilled volunteer labor. Several projects undertaken by the County and local municipalities occurred on publically owned land. This includes but is not limited to the following: Hope Shelter Operations – Operational costs for an emergency shelter for homeless mothers and their children, the City of Jonesboro infrastructure improvements of the Lee Street Park open plaza and park and trail improvements in the City of Lake City.

Fiscal Year Summary – HOME Match	
1. Excess match from prior Federal fiscal year	\$2,374,672
2. Match contributed during current Federal fiscal year	\$91,012
3. Total match available for current Federal fiscal year (Line 1 plus Line 2)	\$2,465,684
4. Match liability for current Federal fiscal year	\$17,000
5. Excess match carried over to next Federal fiscal year (Line 3 minus Line 4)	\$2,448,684

Table 5 – Fiscal Year Summary - HOME Match Report

Activity Number	Date of Closing	Buyer Required Contribution	Buyer Actual Contribution	Buyer Closing Contribution	DPA Assistance	Sales Price	Match Amount
2179	9/15/2022	\$1,000	\$3,000	\$2,058	\$15,000	\$240,000	\$5,058
2180	9/16/2022	\$1,000	\$3,000	\$1,000	\$10,000	\$224,000	\$4,000
2186	10/31/2022	\$1,000	\$1,950	\$925	\$15,000	\$195,000	\$2,875
2190	11/17/2022	\$1,000	\$1,860	\$1,050	\$10,000	\$186,000	\$2,910
2192	12/9/2022	\$1,000	\$1,500	\$1,050	\$15,000	\$155,000	\$2,550
2193	12/6/2022	\$1,000	\$2,000	\$1,100	\$10,000	\$215,000	\$3,100
2194	1/11/2023	\$1,000	\$2,460	\$1,100	\$10,000	\$232,000	\$3,560
2195	1/20/2023	\$1,000	\$2,000	\$3,633	\$10,000	\$201,000	\$5,633
2199	3/31/2023	\$1,000	\$2,200	\$8,744	\$10,000	\$220,000	\$10,944
2201	4/5/2023	\$1,000	\$2,000	\$1,281	\$10,000	\$200,000	\$3,281
2202	4/6/2023	\$1,000	\$2,000	\$2,802	\$10,000	\$135,000	\$4,802
2203	4/5/2023	\$1,000	\$2,250	\$3,923	\$15,000	\$224,900	\$6,173
2204	4/7/2023	\$1,000	\$4,000	\$1,050	\$10,000	\$200,000	\$5,050
2206	4/10/2023	\$1,000	\$2,500	\$3,413	\$10,000	\$250,000	\$5,913
2207	4/26/2023	\$1,000	\$4,000	\$3,172	\$15,000	\$267,000	\$7,172
2208	5/1/2023	\$1,000	\$2,000	\$1,090	\$15,000	\$174,000	\$3,090
2209	5/10/2023	\$1,000	\$2,000	\$1,337	\$15,000	\$250,000	\$3,337
2212	6/2/2023	\$1,000	\$2,500	\$5,550	\$10,000	\$250,000	\$8,050
2217	6/26/2023	\$1,000	\$2,250	\$1,264	\$15,000	\$229,000.	\$3,514
TOTAL		\$17,000	\$45,470	\$45,542	\$230,000	\$4,047,900	\$91,012
NOTE: Purchase price ranges is \$135K - \$267K. The average purchase is \$213,047 versus \$168,139 for the previous match report, an increase of 27%.							

Table 6 – Match Contribution for the Federal Fiscal Year

Program Income – Enter the program amounts for the reporting period					
Balance on hand at beginning of reporting period	Amount received during reporting period	Total amount expended during reporting period	Amount expended for TBRA	Program income adjustment	Balance on hand at end of reporting period
\$58,216	\$122,971	\$139,187	\$95,085	\$0	\$42,000

Table 7 – Program Income

HOME MBE/WBE report

Minority Business Enterprises and Women Business Enterprises – Indicate the number and dollar value of contracts for HOME projects completed during the reporting period						
	Total	Minority Business Enterprises				White Non-Hispanic
		Alaskan Native or American Indian	Asian or Pacific Islander	Black Non-Hispanic	Hispanic	
Contracts						
Dollar Cost	0	0	0	0	0	0
Number	0	0	0	0	0	0
Sub-Contracts						
Number	0	0	0	0	0	0
Cost	0	0	0	0	0	0
	Total	Women Business Enterprises	Male			
Contracts						
Cost	0	0	0			
Number	0	0	0			
Sub-Contracts						
Number	0	0	0			
Cost	0	0	0			

Table 8 - Minority Business and Women Business Enterprises

Minority Owners of Rental Property – Indicate the number of HOME assisted rental property owners and the total amount of HOME funds in these rental properties assisted						
	Total	Minority Property Owners				White Non-Hispanic
		Alaskan Native or American Indian	Asian or Pacific Islander	Black Non-Hispanic	Hispanic	
Number	0	0	0	0	0	0
Cost	0	0	0	0	0	0

Table 9 – Minority Owners of Rental Property

Relocation and Real Property Acquisition – Indicate the number of persons displaced, the cost of relocation payments, the number of parcels acquired, and the cost of acquisition		
Parcels Acquired	0	0
Businesses Displaced	0	0
Nonprofit Organizations Displaced	0	0
Households Temporarily Relocated, not Displaced	0	0

Households Displaced	Total	Minority Property Enterprises				White Non-Hispanic
		Alaskan Native or American Indian	Asian or Pacific Islander	Black Non-Hispanic	Hispanic	
Number	0	0	0	0	0	0
Cost	0	0	0	0	0	0

Table 10 – Relocation and Real Property Acquisition

CR-20 - Affordable Housing 91.520(b)

Evaluation of the jurisdiction's progress in providing affordable housing, including the number and types of families served, the number of extremely low-income, low-income, moderate-income, and middle-income persons served.

	One-Year Goal	Actual
Number of Homeless households to be provided affordable housing units	20	16
Number of Non-Homeless households to be provided affordable housing units	50	50
Number of Special-Needs households to be provided affordable housing units	0	0
Total	70	66

Table 11 – Number of Households

	One-Year Goal	Actual
Number of households supported through Rental Assistance	50	16
Number of households supported through The Production of New Units	5	0
Number of households supported through Rehab of Existing Units	60	33
Number of households supported through Acquisition of Existing Units	55	17
Total	165	63

Table 12 – Number of Households Supported

Discuss the difference between goals and outcomes and problems encountered in meeting these goals.

During the 2022 program year, a total of 14 families were provided assistance through the County's tenant-based rental assistance program, which services households that have been identified as homeless. TBRA assistance was provided for an average of roughly 4 months with clients receiving services for a minimum of one month and up to 7 months during the period. This accounts for \$112,572 in HOME funding utilized to support the program.

Affordable housing assistance provided to non-homeless persons attained its project goal. Seventeen low- and moderate-income, first time homeowners received down payment assistance up to \$15,000 toward the purchase of single-family housing in Clayton County. In total, Clayton County provided \$230,000 in HOME funds to assist homebuyers during the program year. Sales prices for homes ranged between \$135,000 and \$267,000.

Discuss how these outcomes will impact future annual action plans.

Even though our 2022 outcomes were attained, the County will continue to project future outcomes to reflect the moderate number of households that can be expected to be served with the available funding for each respective program year.

Include the number of extremely low-income, low-income, and moderate-income persons served by each activity where information on income by family size is required to determine the eligibility of the activity.

Number of Households Served	CDBG Actual	HOME Actual
Extremely Low-income	0	0
Low-income	3,499	33
Moderate-income	0	0
Total	3,499	33

Table 13 – Number of Households Served

Narrative Information

CR-25 - Homeless and Other Special Needs 91.220(d, e); 91.320(d, e); 91.520(c)

Evaluate the jurisdiction's progress in meeting its specific objectives for reducing and ending homelessness through:

Reaching out to homeless persons (especially unsheltered persons) and assessing their individual needs

During the program year, the County provided both CDBG and ESG funds to five agencies assisting homeless persons in Clayton County. These organization include, Africa's Children's Fund, Clayton Community Services Authority, Calvary Refuge, Inc., Clayton County Office of Grants Administration, Hearts to Nourish Hope, and HOPE Shelter. These organizations provided either emergency shelter, rapid re-housing or tenant-base rental assistance to homeless individuals and families. Outreach performed by the subrecipients included:

- Working in partnership with local organization for referrals;
- Participating in special events targeting homeless families;
- Maintaining a website detailing available services;
- Distributing quarterly newsletters;
- Performing street outreach targeting homeless individuals;
- Participating in special events; and
- Attending public speaking engagements.

Subrecipients also carried out case management services with clients. Each agency provides services which assess clients in order to identify individual and/or family needs. For example, Hearts to Nourish Hope and Calvary Refuge requires that person receiving emergency shelter meet with staff at regular intervals to identify essential resources that assists families with stabilization. Services may include assistance with transportation costs, employment searches, healthcare services, child care assistance and other supportive services as needed. HOPE Shelter provides case management support while, Clayton County Office of Grants Administration has worked to provide overall housing counseling support to its clients participating in the County's tenant-based rental assistance program. This includes helping families develop long-term plans and financial goals that will increase their success upon transitioning from the Student Housing Initiative Program (SHIP).

Addressing the emergency shelter and transitional housing needs of homeless persons

As stated, funding was allocated from both CDBG and ESG funds to address the needs of homeless persons requiring emergency or transitional shelter. Activities primarily supported shelter operations accounting utility costs, food and case management. As for the TBRA program, direct rental payments were made on the behalf of homeless families identified through the Clayton County Board of Education's Homeless Education Department. The HOPE Shelter continues to assist women and their children for up to day days. Calvary Refuge continues to house clients for up to a 21-day period. HOPE Shelter assists women

and children for up to 90-days. The Clayton County Office of Grants Administration assists clients for up to one-year. In PY2022, the County provided additional rapid rehousing services under the Africa's Children's Fund program in order to expand the availability of programs designed to assist homeless families within the County.

Helping low-income individuals and families avoid becoming homeless, especially extremely low-income individuals and families and those who are: likely to become homeless after being discharged from publicly funded institutions and systems of care (such as health care facilities, mental health facilities, foster care and other youth facilities, and corrections programs and institutions); and, receiving assistance from public or private agencies that address housing, health, social services, employment, education, or youth needs

Each year, the County utilizes its limited resources to support agencies with capacity to best serve homeless or nearly homeless individuals and families. Thus funding is primarily used towards the provision of shelter whereby agencies administer components of supportive housing services to the extent that they are able.

Clayton County used a portion of its ESG funding to support rapid re-housing options for various populations, sub-groups, including single adults and families, through rental assistance, utility deposits and utility payments. Rent assistance is paid in full during the time of the client's enrollment. TBRA funding will support families with children.

Referrals are also provided to clients to assist them in addressing housing, health, social services, employment, education and other needs. It is important to note that none of the agencies funded specifically assist those likely to become homeless after discharge from a publicly funded institution or system. Homeless activities in Clayton County are largely designed to support women with children that meet the threshold of extremely-low or very-low income. However, through consultations with various subrecipients, the need to improve coordination with agencies such as mental health and corrections institutions has been stated. As a result of this feedback, the County continues to seek opportunities to better serve these populations.

Helping homeless persons (especially chronically homeless individuals and families, families with children, veterans and their families, and unaccompanied youth) make the transition to permanent housing and independent living, including shortening the period of time that individuals and families experience homelessness, facilitating access for homeless individuals and families to affordable housing units, and preventing individuals and families who were recently homeless from becoming homeless again

The County's tenant-based rental assistance program provides the best example of how federal funding has been utilized to assist families into affordable housing. The program is administered by Clayton County Office of Grants Administration and assists homeless families with children in the County's public

school system. Participants receive rental subsidies for up to one-year and are provided wrap around services with the intent of moving families into continued housing stabilization.

CR-30 - Public Housing 91.220(h); 91.320(j)

Actions taken to address the needs of public housing

The Jonesboro Housing Authority (JHA) is the agency within Clayton County that addresses public housing needs. During the program year, no eligible activities were proposed by the agency that would further support housing solution for low- and moderate income residents. The County has consulted with JHA to determine the potential of using HUD funds to support eligible public housing activities. As a result, a number of challenges and concerns were raised by the agency, which include:

1. The agency continues to experience administrative budget shortfalls, which has a currently impact on service delivery due to the reduction of qualified staff.
2. Adequate space for client intake still remains an unresolved issue. The agency faces difficulty in troubleshooting this issues as a result of the facility's age and limit space available for expansion.
3. The housing authority has successfully organized a resident association; however, additional guidance is needed to assist members in taking action and organizing activities on behalf of the housing community. As a result of this consultation, Office of Grants Administration will work with JHA within the program year in an effort to identify opportunities for collaboration. The agency did not apply for funding during PY2022; however did indicate a need to explore how HUD funds may address some of the current issues faced.

Actions taken to encourage public housing residents to become more involved in management and participate in homeownership

As mentioned, the County has not played a role in or provided funding resources to assist JHA in improving resident participation. The County will seek ways to better distribute information on first-time homebuyer downpayment assistance and educate public housing residents on the availability of affordable homes. Moreover, efforts to better educate public housing residents about the path to homeownership is also needed. We also can improve our effort to promote awareness about the affordability of homeownership within the County.

Actions taken to provide assistance to troubled PHAs

N/A.

CR-35 - Other Actions 91.220(j)-(k); 91.320(i)-(j)

Actions taken to remove or ameliorate the negative effects of public policies that serve as barriers to affordable housing such as land use controls, tax policies affecting land, zoning ordinances, building codes, fees and charges, growth limitations, and policies affecting the return on residential investment. 91.220 (j); 91.320 (i)

Clayton County is committed to making decent affordable housing available to all the residents of the County. A wide variety of policy and program initiatives have been instituted to move toward this goal. The County's the Tyler Munis software system continued to be improved and upgraded during the 2022 program year. This system increases the efficiency of the County's planning, zoning, permitting and licensing processes by decreasing the time required to review and process requests. Accordingly, this results in a reduction of the holding costs for developers and residents building and purchasing homes within the County. We expect that the cost savings will positively impact the affordability of rental and homeownership units. The County will continue to monitor sales trends to determine if there is a measurable impact over time.

Actions taken to address obstacles to meeting underserved needs. 91.220(k); 91.320(j)

Clayton County is committed to addressing the accessibility obstacles that prevent underserved persons from obtaining decent, sanitary and affordable housing. All of Clayton County Office of Grants Administration programs are designed to serve all Clayton County Citizens including the underserved, children and youth, economically disadvantaged, elderly, seniors, female headed households, homeless, those threatened with homelessness, all ethnicities, minorities and all special needs populations. Other supported programs promote other community amenities which add to the quality of life. All recipients of federal program funding are mandated to collect beneficiary information. This collection of these data allow the County to verify the level of services, calculate those that are served, measure progress of which we are serving and refine programs and services based on the data analysis. During Program year 2022, the County continued to respond to the underserved needs as they were identified, either through self-assessment survey, or citizen participation. The County continued to pursue all available sources of funding for affordable housing activities to reduce the gaps and barriers to affordable housing such as the lack of fair housing policies and accessibility to transitional housing options. The Jonesboro Housing Authority will continue conducting periodic needs assessment to the persons on the waiting list(s) to ensure that the housing opportunities offered by the JHA are consistent with those needed to address the needs of the targeted population. Other actions will include participating with the County in hosting seminars and open house directed briefings to identify need gaps of the persons needing affordable housing options within the geographic locale.

Actions taken to reduce lead-based paint hazards. 91.220(k); 91.320(j)

The County has its own certified Lead Based Paint (LBP) inspector to test pre-1978 housing in its CDBG programs. Such housing units that are being rehabilitated and where paint is to be disturbed are given a

complete inspection. County subrecipients that do rehabilitation work use a private firm for LBP inspections. While the County does not have dedicated LBP remediation funds, any homes found to have LBP are addressed according to the level of funding available. Clayton County's housing stock is relatively new, with almost 95% having been constructed after 1960, and almost 60% after 1979. Without a substantial older housing stock, lead-based paint is not as prevalent.

During the program year, Clayton County's Office of Grants Administration conducted inspections by certified staff to determine the presence and location of lead based paint in the home in compliance with the Lead Safe Housing Rule found at 24CFR 35.115.

Additionally, in the implementation of its Essential Home Repair Program (EHRP) and Emergency Repair Program (ERP), Clayton County follows lead-based paint regulations which include:

- Notification to tenant and homebuyers;
- Disclosure of lead-based paint information;
- Identification of defective paint surfaces;
- Treatment of defective surfaces; and
- Response to children with elevated blood levels (EBLs).

Actions taken to reduce the number of poverty-level families. 91.220(k); 91.320(j)

While a solution to assisting the significant number of Clayton County residents living in poverty are beyond the scope of the three HUD formula programs covered by Clayton County's Consolidated Plan, many agencies throughout Clayton County actively pursue the elimination of poverty. The County administers other assistance programs and received a variety of funding which, together, strategically addresses the goals of reducing poverty and improving the self-sufficiency of low-income residents. It is the goal of the County to assist families facing the hardship of poverty by improving their standard of living, address lack of jobs and deteriorated neighborhoods.

Actions taken to develop institutional structure. 91.220(k); 91.320(j)

In addressing the County's housing and community development needs, the County coordinated the efforts of different departments and agencies. Consultation with different departments and agencies continued during the program year to provide a comprehensive approach to addressing the County's housing and community development needs. Gaps and overlaps in services to Clayton County's low- and moderate-income residents were identified and the County continued a community engagement approach. This is a multi-departmental approach to examine the social determinants of health and address inequities and disparities in the system that prevent or discourage health equity for certain demographic groups in the County. The resources coming to the County through HUD played an important role in assisting these populations as affordable housing and supportive services both continue to be critical needs for these populations.

Actions taken to enhance coordination between public and private housing and social service agencies. 91.220(k); 91.320(j)

Public and private housing providers as well as social service agencies were engaged in an effort to identify opportunities for partnership that may leverage the resources of its HUD funded programs. More specifically this included:

- Continuing the administration of the Student Housing Initiative Program (SHIP) by the Clayton County Office of Grants Administration to provide rental assistance and case management services for homeless families with children enrolled in the Clayton County public school system;
- Coordinating the provision of referrals with the Clayton County Board of Education's Homeless Student's Department;
- Providing ongoing support to Africa's Childrens Fund for the operations of their rapid re-housing program.

Consultations with Clayton County departments, citizens and non-profit agencies will continue to occur on an on-going basis to assess community and county-wide needs. Clayton County is committed to enhancing coordination and developing collaborative partnerships between public, non-profit and private organizations to more efficiently address the goals and objectives of the consolidated plan.

Each year, Needs Assessment Public Hearings are held. Meeting locations are geographically disbursed throughout the County to offer opportunities for all citizens and agencies to participate. Information is gathered from Consolidated Plan Surveys submitted by service providers, municipalities, public housing agencies and Clayton County departments.

During PY2022, the County continued conducting meetings and consultations with numerous Clayton County departments and non-profit service providers.

Identify actions taken to overcome the effects of any impediments identified in the jurisdictions analysis of impediments to fair housing choice. 91.520(a)

During the program year, the Clayton County Office of Grants Administration provided financial support to Atlanta Metro Fair Housing to support the County's Fair Housing efforts. This included support for facilitating monthly homebuyer workshops in the County, which also serve to address fair housing. The agency also maintains the fair housing hotline that is accessible to Clayton County residents. Additionally, county employees participated in Metro Fair Housing's annual fair housing training aimed at practitioners. The training emphasized compliance with the Fair Housing Act from the perspective of various housing professionals and public service providers.

Additional actions taken to overcome the effects of impediments to fair housing choice in Clayton County included:

- Providing down payment assistance or mortgage assistance to over 17 households;
- Coordinating home repair assistance to over 16 low and moderate-income seniors seeking to retain ownership and occupancy of their existing homes;
- Funding housing counseling agencies guiding prospective buyers through the home purchase process in Clayton County;
- The Office of Grants Administration website continued to facilitate the translation of vital information into other languages and ensuring its compatibility with devices and features designed to aid individuals with hearing and/or visual or impairments.

CR-40 - Monitoring 91.220 and 91.230

Describe the standards and procedures used to monitor activities carried out in furtherance of the plan and used to ensure long-term compliance with requirements of the programs involved, including minority business outreach and the comprehensive planning requirements

During this reporting period, monitoring was conducted by the County's Senior Compliance Officer and Financial Compliance Officer. More specifically, this included the following:

- Completing the necessary financial control procedures to verify the accuracy of all disbursement requests (general ledgers, audits and copies of payrolls) and reviewing disbursement requests for consistency with the sub-recipient agreement and federal regulations;
- When applicable, completing on-site inspections of construction projects to ensure compliance with the grant agreement, Davis Bacon Act, MBE/WBE and Section 3 participation requirements (conducted virtual employee interviews and file reviews);
- Conducting desk audits of public service activities to gauge the accuracy of beneficiary reports (file review, records and documentation verified);
- Performing ongoing monitoring of sub recipients utilizing the HUD desk monitoring handbook and completing detailed file reviews prior to closeout of grant activities.

The following sub-recipients were monitored during the program year of July 1, 2022 – June 30, 2023: Africa's Children's Fund; Atlanta Legal Aid Society; Calvary Refuge Shelter; City of Jonesboro; City of Lovejoy; City of Riverdale; Clayton Community Services Authority; Clayton County Parks and Recreation; Hearts to Nourish Hope; Hope Shelter; Metro Fair Housing; Rainbow House; Salvation Army; and Southern Crescent Sexual Assault and Child Advocacy Center.

In addition, the Clayton County Office of Grants Administration provided technical assistance to sub-recipients, included reviewing procurement documentation and construction contracts to ensure compliance with federal procurement regulations.

Moreover, Clayton County seeks to ensure long-term compliance by continuing to monitor assets acquired with HUD funding. This includes the specific monitoring of households that received down payment and/or mortgage assistance from a HUD funded grant program as well as completing reviews of

inventory of furniture, fixtures and equipment purchased with HUD funding.

Citizen Participation Plan 91.105(d); 91.115(d)

Describe the efforts to provide citizens with reasonable notice and an opportunity to comment on performance reports.

The availability of the 2022 CAPER for public review and comment was announced in a Public Notice in the *Clayton News Daily* on August 9, 2023 and on the Clayton County Office of Grants Administration webpage. The Public Notice announced the availability of the CAPER for review beginning on August 24, 2023. Public comments received on the draft CAPER were required for submission to Clayton County by August 24, 2023 by 5:00 p.m. A summary of the comments received are included in the Appendix, Exhibit 2 – Citizen’s Comments.

The Clayton County Office of Grants Administration has taken specific actions to provide for and encourage increased participation in its housing and community development programs, particularly by persons of low- and moderate-income. Some of the actions include:

- Identifying areas in the County with concentrations of low- and moderate-income persons for the purpose of prioritizing geographic funding allocations;
- Preparing project proposal application forms, and the Consolidated and Annual Action Plans in a manner so as to afford low- and moderate-income persons, and other affected citizens, the opportunity to examine its contents;
- Informing citizens through newspaper articles and advertisements, local contact persons, public hearings, the Clayton County Office of Grants Administration website (www.claytoncountyhud.com) of the amount of HUD grant funds available for proposed activities, the potential activities to be funded, the actual projects chosen for funding, and the availability of the Proposed Consolidated and Annual Action Plans, plan amendments, and annual progress reports for public review and comment;
- Review of all citizen comments and incorporation of such comments in the Consolidated and Annual Action Plans, as applicable;
- Analyzing the impact of Consolidated and Annual Action Plans program activities on neighborhood residents, particularly very low-income, low-income, and moderate-income residents;
- Conducting Needs Assessments, on-site visits, and site analysis for proposed projects, before inclusion in the Proposed Consolidated and Annual Action Plans;
- Virtual meetings with individual citizens, neighborhood organizations, and other groups to inform them about the Consolidated and Annual Action Plans, project eligibility, the program planning process, project selection and funding, and the project implementation process.

The Clayton County Office of Grants Administration provides timely and accurate information about the housing and community development program to all participating municipalities in its

jurisdiction. Numerous meetings are held and written documents transmitted to all the cities (participating and non-participating). Many of the largest concentrations of low- and moderate-income persons reside within the boundaries of these municipalities particularly Forest Park, Jonesboro and Riverdale. Active participation by these cities in the Clayton County housing and community development programs helps to ensure that all low- and moderate-income city residents can participate fully in these HUD-assisted activities.

CR-45 - CDBG 91.520(c)

Specify the nature of, and reasons for, any changes in the jurisdiction's program objectives and indications of how the jurisdiction would change its programs as a result of its experiences.

During the 2022 program year, the County worked to improve its PY2022 Action Plan to better define the relationship of its funded activities to the stated goals and objectives provided in the new 5-year Consolidated Plan. There is still a need to address not only changes to the projected outcomes initially provided in the Consolidated Plan, but also a need to improve evaluation and data tracking processes to better assess the program's outcomes. This includes providing data on projects in a timely manner ahead of the end of year report. This action will served to reflect a more accurate depiction of the accomplishments achieved by each CDBG funded activity and provide a clearer analysis of the program's outcomes.

In 2022, implementation of administrative improvements identified in the prior year report continued to be applied to the programs. These included:

- Better reporting of beneficiary data that is more succinct with HUD's data requirements;
- Improved reimbursement submissions by subrecipients to better account for fund spent during the program year;
- Improved coordination with the County's Finance Department to close out the fiscal year in advance of the CAPER submittal;
- Consistent monitoring of HUD commitment and expenditure deadlines to ensure compliance;
- Implemented recommendations provided by the HUD technical assistance providers; and
- Provided updated Subrecipient agreements to ensure better tracking of outcomes and compliance with HUD regulations.

Other areas still needing to be addressed to improve the efficiency of the County's program include:

- Offering additional training to subrecipients in regards to reporting procedures and regulatory changes; and
- Completing accomplishment data in advance of the end of year report.

Does this Jurisdiction have any open Brownfields Economic Development Initiative (BEDI) grants?

No

[BEDI grantees] Describe accomplishments and program outcomes during the last year.

CR-50 - HOME 91.520(d)

Include the results of on-site inspections of affordable rental housing assisted under the program to determine compliance with housing codes and other applicable regulations

Please list those projects that should have been inspected on-site this program year based upon the schedule in §92.504(d). Indicate which of these were inspected and a summary of issues that were detected during the inspection. For those that were not inspected, please indicate the reason and how you will remedy the situation. During the program year, the Clayton County Office of Grants Administration completed seventeen inspections on rental units as part of the tenant-based rental assistance program. The following is a list of units that passed inspection:

397 River Oak Drive, Riverdale (11/23/2022)
6279 Flamingo Way, Morrow (12/20/2022)
634 Roy Huie Rd., Apt # 8, Riverdale (3/6/2023)
6882 Diamond Drive, Rex (3/6/2023)
7545 Tara Road, Jonesboro (3/7/2023)
5301 Old Dixie Way, Forest Park (3/7/2023)
1608 Stonebridge, Riverdale (3/8/2023)
852 Garden Walk, College Park (3/8/2023)
5274 Riverdale Road, College Park (3/8/2023)
330 Arrowhead, Apt # 48-C, Jonesboro (3/8/2023)
634 Roy Huie Road, Apt # 8-F, Riverdale (3/13/2023)
9388 Wood Knoll Way, Jonesboro (5/8/2023)
916 Walnut Creek Lane, Jonesboro (5/23/2023)
2309 Nicole Drive, Hampton (5/23/2023)
7101 Green Valley Circle, Riverdale (5/23/2023)
6655 Mt. Zion Blv. Apt. 3810, Morrow (6/21/2023)
8935 Gateway Circle, Jonesboro (6/29/2023)

In summary, each unit that was inspected was able to pass the HSQ inspection process. In some cases, minor issues were identified but were resolved upon re-inspection. Landlords were asked to address any items not meeting the standard within a reasonable time period. Minor compliance issues that were identified during inspections included, missing or not working GFI outlets in kitchens and bathrooms, minor ADA compliance issues with entryways, inoperable appliances in kitchen areas, replacement of air filters in HVAC units and non-functioning smoke detectors due old batteries.

Provide an assessment of the jurisdiction's affirmative marketing actions for HOME units. 92.351(b)

It is the County's objective to comply with all federal guidelines regarding affirmative marketing of housing and other services provided under CFR 24 92.351. In accordance with the regulation, the County takes measures to ensure that its programs and services and those carried out by its subrecipients provide opportunities to attract and provide relevant information to all eligible persons without consideration of

race, color, national origin, sex, religion, familial status or disability. All housing-related activities performed using HOME funding are available to any income eligible person residing in or seeking residence in Clayton County.

These activities and their respective affirmative marketing methods are outlined as such:

- The Clayton County Downpayment Assistance program markets the availability of down payment funds by broadly disseminating information through its program websites (www.claytonnsp.com and www.claytoncountyhud.com). Potential buyers are able to obtain information on guidelines and the level of assistance offered based on household size and income. Additionally, program information is distributed to minority business enterprises, which include the Empire Board of Realtors and Metro South Board of Realtors. It is notable to mention that participants in the mortgage assistance program are required to receive eight hours of pre-homebuyer counseling at which time information is shared regarding fair housing rights and responsibilities.
- The County's Tenant-Based Rental Assistance (TBRA) program, now operated by Clayton County Office of Grants Administration provides rental subsidy assistance to homeless families with children enrolled in the Clayton County Public Schools system. Due to the limited nature of the program, marketing materials in both English and Spanish are provided by the agency to the school's Homeless Education Department and shared with persons who qualify as homeless and meet the criteria for participation in the program.
- Lastly, the County provides funding support to its Community Housing Development Organization (CHDO), which has completed the construction and rehabilitation of affordable housing throughout the County. These homes are marketed to income-eligible participants, who also receive mortgage assistance supported by HOME. The County's CHDO, Southern Crescent Habitat for Humanity markets the availability of their affordable housing services by widely distributing program information via the agency's website (<http://www.schabitat.org/housing-services/homeownership>) and community outreach efforts.

Refer to IDIS reports to describe the amount and use of program income for projects, including the number of projects and owner and tenant characteristics

During the program year, Clayton County received program income totaling \$122,971 generated through the recapture of funds repaid through the down payment assistance program. The program income will be used for additional downpayment assistance.

Describe other actions taken to foster and maintain affordable housing. 91.220(k) (STATES ONLY: Including the coordination of LIHTC with the development of affordable housing). 91.320(j)

Due to the limited nature of available HOME funds to the County, program diversity is restricted to CHDO Set-Aside allocations, down payment assistance, tenant-based rental assistance and program administration. Each year, the County strives to make adequate funding allocations to support its CHDO,

downpayment assistance program and TBRA initiative and has identified these activities as the best and highest use of HOME funds considering the expressed needs of residents and priorities identified in the 2018-2022 Consolidated Plan. The results of these programs in 2022 are as follows:

14 families identified as homeless by the Clayton County Office of Grants Administration were provided with rental subsidies for up to 12 months. Subsidy amounts ranged between \$50-\$1,000 per month per household.

17 residents received downpayment assistance in amounts ranging from \$10,000 - \$15,000 per household toward eligible single-family housing in Clayton County.

CR-60 - ESG 91.520(g) (ESG Recipients only)

ESG Supplement to the CAPER in *e-snaps*

For Paperwork Reduction Act

1. Recipient Information—All Recipients Complete

Basic Grant Information

Recipient Name	CLAYTON COUNTY
Organizational DUNS Number	069227536
EIN/TIN Number	586000802
Identify the Field Office	ATLANTA
Identify CoC(s) in which the recipient or subrecipient(s) will provide ESG assistance	Georgia Balance of State CoC

ESG Contact Name

Prefix	Mrs.
First Name	Linda
Middle Name	
Last Name	Boswell
Suffix	
Title	Director, Grants Administration

ESG Contact Address

Street Address 1	1671 Adamson Pkwy
Street Address 2	Ste 101
City	Morrow
State	GA
ZIP Code	-
Phone Number	7704774523
Extension	
Fax Number	7702105215
Email Address	Linda.boswell@claytoncountyga.gov

ESG Secondary Contact

Prefix	Ms
First Name	Ashley
Last Name	Patterson
Suffix	
Title	Senior Program Specialist
Phone Number	7704735732
Extension	
Email Address	ashley.patterson@claytoncountyga.gov

2. Reporting Period—All Recipients Complete

Program Year Start Date 07/01/2022
Program Year End Date 06/30/2023

3a. Subrecipient Form – Complete one form for each subrecipient

Subrecipient or Contractor Name: Africa’s Children’s Fund
City: Jonesboro
State: Georgia
Zip Code: 30236
DUNS Number: 095625377
Is subrecipient a victim services provider?: No
Subrecipient Organization Type: Not for profit
ESG Subgrant or Contract Award Amount: \$75,648

Subrecipient or Contractor Name: Calvary Refuge
City: Forest Park
State: Georgia
Zip Code: 30298
DUNS Number: 833734981
Is subrecipient a victim services provider?: No
Subrecipient Organization Type: Not for profit
ESG Subgrant or Contract Award Amount: \$38,700

Subrecipient or Contractor Name: Clayton County Office of Grants Administration
City: Morrow
State: Georgia
Zip Code: 30260
DUNS Number: 581551508
Is subrecipient a victim services provider?: No
Subrecipient Organization Type: Governmental agency
ESG Subgrant or Contract Award Amount: \$15,000

Subrecipient or Contractor Name: Hearts to Nourish Hope
City: Riverdale
State: Georgia
Zip Code: 30274
DUNS Number: 06809097570
Is subrecipient a victim services provider?: No
Subrecipient Organization Type: Not for profit
ESG Subgrant or Contract Award Amount: \$15,000

Subrecipient or Contractor Name: Another Chance of Atlanta
City: Riverdale
State: Georgia
Zip Code: 30274
DUNS Number: 095625377
Is subrecipient a victim services provider?: No
Subrecipient Organization Type: Not for profit
ESG Subgrant or Contract Award Amount: \$50,000

CR-65 - Persons Assisted – THIS SECTION GENERATED BY SAGE.

4. Persons Served

4a. Complete for Homelessness Prevention Activities

Number of Persons in Households	Total
Adults	231
Children	137
Don't Know/Refused/Other	0
Missing Information	0
Total	368

Table 16 – Household Information for Homeless Prevention Activities

4b. Complete for Rapid Re-Housing Activities

Number of Persons in Households	Total
Adults	4
Children	4
Don't Know/Refused/Other	0
Missing Information	0
Total	8

Table 17 – Household Information for Rapid Re-Housing Activities

4c. Complete for Shelter

Number of Persons in Households	Total
Adults	982
Children	510
Don't Know/Refused/Other	0
Missing Information	0
Total	1,492

Table 18 – Shelter Information

4d. Street Outreach

Number of Persons in Households	Total
Adults	0
Children	0
Don't Know/Refused/Other	0
Missing Information	0
Total	0

Table 19 – Household Information for Street Outreach

4e. Totals for all Persons Served with ESG

Number of Persons in Households	Total
Adults	1,056
Children	647
Don't Know/Refused/Other	0
Missing Information	0
Total	1,703

Table 20 – Household Information for Persons Served with ESG

5. Gender—Complete for All Activities

	Total
Male	756
Female	946
Transgender	1
Don't Know/Refused/Other	0
Missing Information	0
Total	1,703

Table 21 – Gender Information

6. Age—Complete for All Activities

	Total
Under 18	646
18-24	229
25 and over	828
Don't Know/Refused/Other	0
Missing Information	0
Total	1,703

Table 22 – Age Information

7. Special Populations Served—Complete for All Activities

Number of Persons in Households

Subpopulation	Total	Total Persons Served – Prevention	Total Persons Served – RRH	Total Persons Served in Emergency Shelters
Veterans	105	0	0	105
Victims of Domestic Violence	131	0	0	131
Elderly	63	0	0	63
HIV/AIDS	19	2	0	17
Chronically Homeless	104	0	0	53
Persons with Disabilities:				
Severely Mentally Ill	244	1	1	244
Chronic Substance Abuse	70	4	0	66
Other Disability	395	19	0	376
Total (Unduplicated if possible)	1,131	76	76	1,055

Table 23 – Special Population Served

CR-70 – ESG 91.520(g) - Assistance Provided and Outcomes

10. Shelter Utilization

Number of New Units - Rehabbed	0
Number of New Units - Conversion	0
Total Number of bed-nights available	2,103
Total Number of bed-nights provided	2,103
Capacity Utilization	100.00%

Table 24 – Shelter Capacity

11. Project Outcomes Data measured under the performance standards developed in consultation with the CoC(s)

The performance standards for the Emergency Solutions program articulated by the Georgia Department of Community Affairs (DCA) Continuum of Care program (CoC) are based on the following:

1. An overall bed utilization rate of 80%.
2. The average length of stay of the households served should not exceed 60 days.

As it relates to Clayton County's Emergency Shelter providers, the utilization rate for 2022 is calculated at 100% reflecting a shelter capacity in line with CoC requirements. These numbers are reported by the County's emergency shelter providers, Calvary Refuge, Inc. and Hope Shelter. Calvary operates with 59 beds at a maximum stay of 21 days; Hope Shelter provides 10 beds for a maximum of 60 days.

In tabulating the number of beds we took Calvary's 59 beds and multiplied by 365 which totaled 21,535. For Hope Shelter, 10 beds multiplied by 365 totaled 3,650. As a matter of policy, both Calvary Refuge and Hope Shelter are open year round. Accordingly, the total bed nights provided matches the number of bed nights available and the utilization rate is 100%.

CR-75 – Expenditures

11. Expenditures

11a. ESG Expenditures for Homelessness Prevention

	Dollar Amount of Expenditures in Program Year		
	2020	2021	2022
Expenditures for Rental Assistance	0	0	0
Expenditures for Housing Relocation and Stabilization Services - Financial Assistance	0	0	0
Expenditures for Housing Relocation & Stabilization Services - Services	0	0	0
Expenditures for Homeless Prevention under Emergency Shelter Grants Program	\$52,687	\$96,931	\$49,006
Subtotal Homelessness Prevention	\$52,687	\$96,931	\$49,006

Table 25 – ESG Expenditures for Homelessness Prevention

11b. ESG Expenditures for Rapid Re-Housing

	Dollar Amount of Expenditures in Program Year		
	2020	2021	2022
Expenditures for Rental Assistance	0	0	0
Expenditures for Housing Relocation and Stabilization Services - Financial Assistance	0	0	0
Expenditures for Housing Relocation & Stabilization Services - Services	0	0	0
Expenditures for Homeless Assistance under Emergency Solutions Grants Program	\$2,836	\$15,000	\$38,701
Subtotal Rapid Re-Housing	\$2,836	\$15,000	\$38,701

Table 26 – ESG Expenditures for Rapid Re-Housing

11c. ESG Expenditures for Emergency Shelter

	Dollar Amount of Expenditures in Program Year		
	2020	2021	2022
Essential Services	\$47,049	\$76,766	\$72,301
Operations	0	0	0
Renovation	0	0	0
Major Rehab	0	0	0
Conversion	0	0	0
Subtotal	\$47,049	\$76,766	\$72,301

Table 27 – ESG Expenditures for Emergency Shelter

11d. Other Grant Expenditures

	Dollar Amount of Expenditures in Program Year		
	2020	2021	2022
Street Outreach	0	0	0
HMIS	0	0	0
Administration	\$9,289	\$20,290	\$17,032

Table 28 - Other Grant Expenditures

11e. Total ESG Grant Funds

Total ESG Funds Expended	2020	2021	2022
	\$122,861	\$213,228	\$177,041

Table 29 - Total ESG Funds Expended

11f. Match Source

	2020	2021	2022
Other Non-ESG HUD Funds	\$0	\$0	\$0
Other Federal Funds	\$0	\$0	\$0
State Government	\$51,354	\$87,302	\$80,112
Local Government	\$76,716	\$130,418	\$119,677
Private Funds	\$371,262	\$631,145	\$579,169
Other	\$0	\$0	\$0
Fees	\$0	\$0	\$0
Program Income	\$0	\$0	\$0
Total Match Amount	\$499,332	\$848,865	\$778,958

Table 30 - Other Funds Expended on Eligible ESG Activities

11g. Total

Total Amount of Funds Expended on ESG Activities	2020	2021	2022
	\$748,747	\$1,062,093	\$955,999

Table 31 - Total Amount of Funds Expended on ESG Activities

ADDENDUM TO CAPER:

Coronavirus Aid, Relief and Economic Security Act (CARES Act) Summary

HUD provided Clayton County with additional CDBG and ESG funding under the Coronavirus Aid, Relief and Economic Security Act (CARES Act), Public Law 116-136. These funds were used to prevent, prepare for, and respond to the coronavirus pandemic (COVID-19) among individuals and families who are homeless or receiving homeless assistance; and to support additional homeless assistance and homelessness prevention activities to mitigate the impacts of COVID-19. Funding also supported building and improvements including rental, mortgage and utility payments, public facilities, assistance to businesses, including special economic assistance, provision of new or quantifiably increased public services and planning, capacity building and technical assistance.

The table and graphs below show the allocations and cumulative expenditures (as of June 30, 2023) for each grant:

Grant	Allocation	Expenditures	Balance
CDBG CV-1	\$1,474,066	\$1,470,836	\$3,230
CDBG CV-3	\$1,689,335	\$1,605,054	\$84,281
ESG CV-1	\$780,931	\$761,594	\$19,337
ESG CV-2	\$1,674,553	\$1,568,396	\$106,157

Table A COVID-19 Expenditures by Grant

CARES ACT GRANTS: CUMULATIVE EXPENDITURES BY GRANT

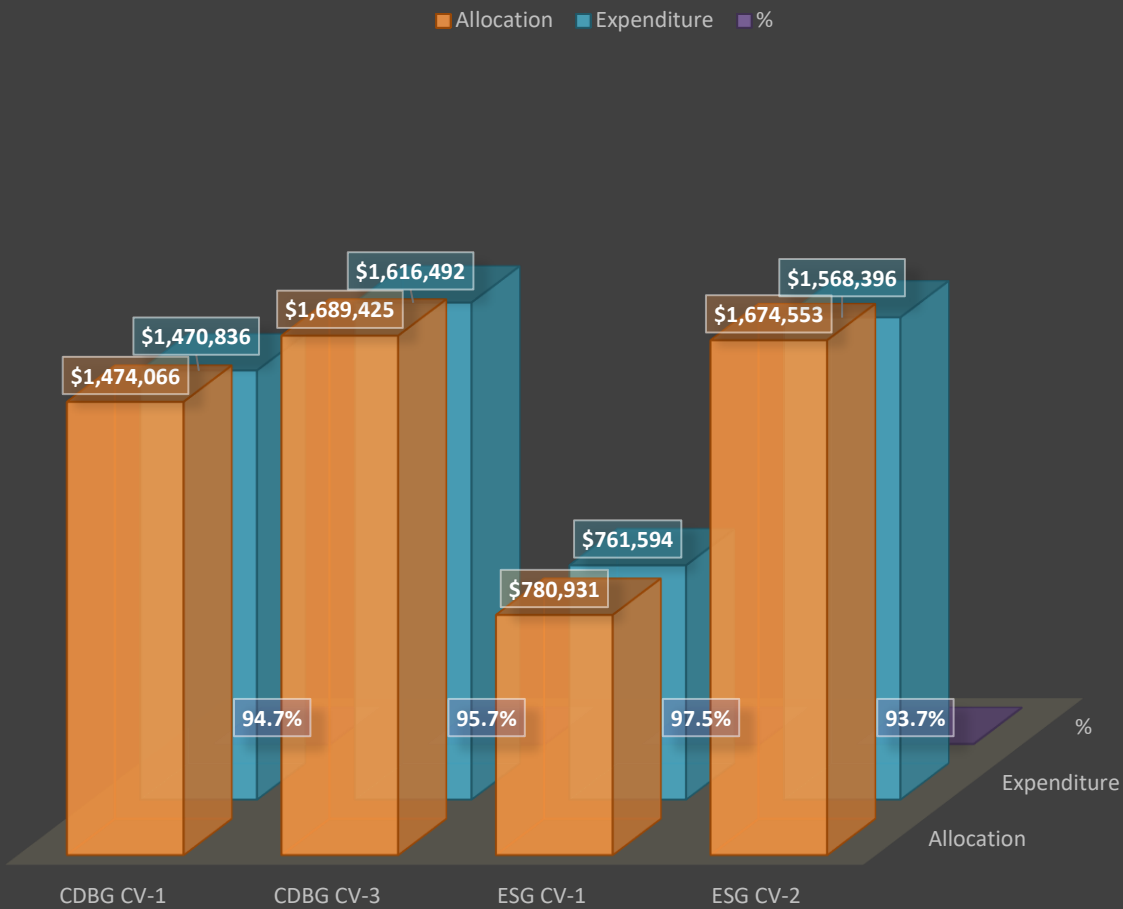


Table B COVID-19 Expenditures by Grant

CDBG-CV Cumulative % Expenditures by National Objective

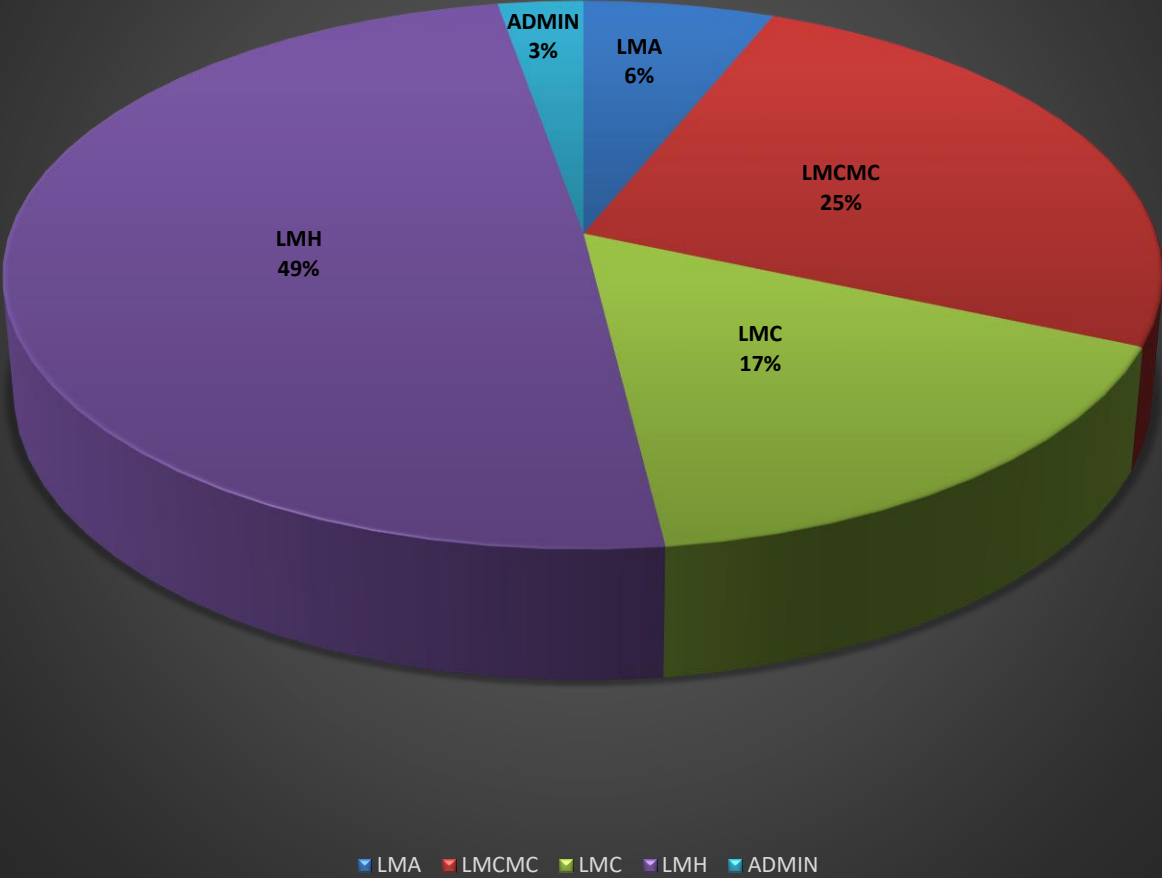


Table C COVID-19 CDBG Expenditures by National Objective

CDBG-CV Cumulative % Expenditures by Activity

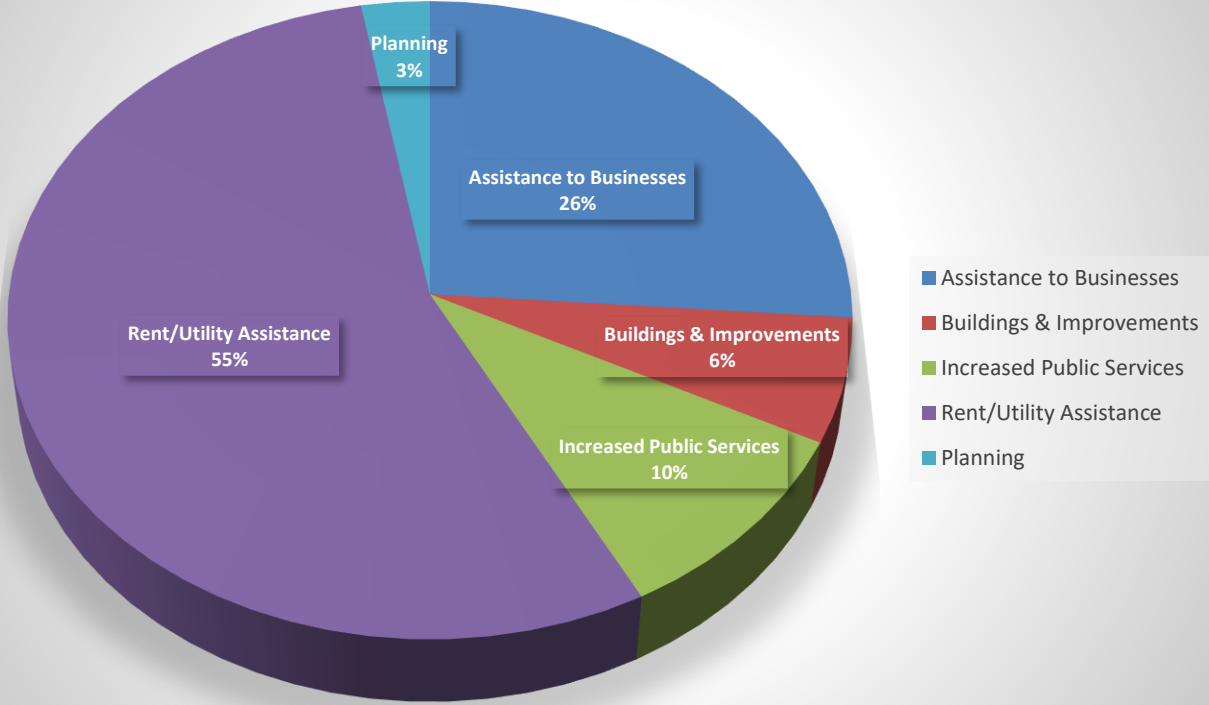


Table D COVID-19 CDBG Expenditures by Eligible Activity